

Tieftonübung in F-Dur

Grifftabelle für B-Instrumente

Ventilinstrumente ohne Quartventil:

f	e	d	c	b	a	g	f
0	2	1	1	0	2	1	1
		2	3			2	3

Zugposaunen ohne Quartventil:

f	e	d	c	b	a	g	f
1	2	4	6	1	2	4	6

Ventilinstrumente mit Quartventil (=4):

f	e	d	c	b	a	g	f
0	2	1	4	0	2	1	4
		2				2	

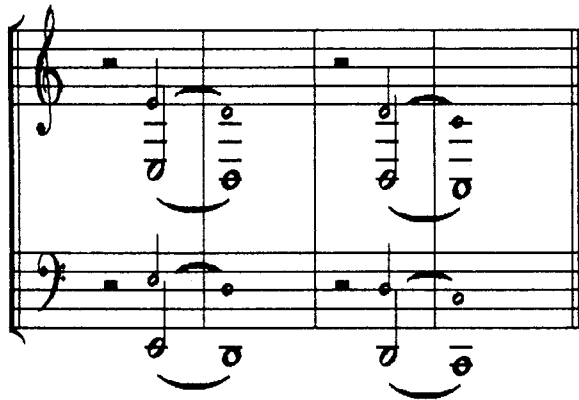
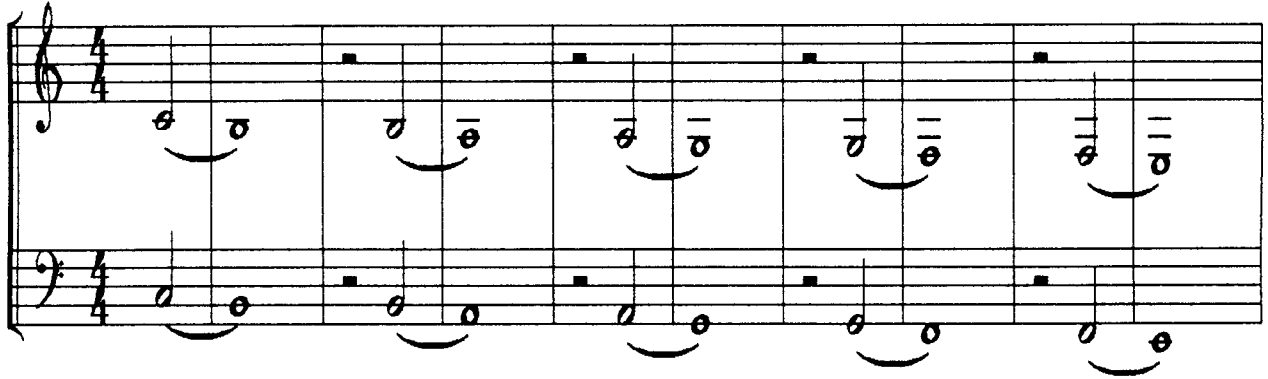
Zugposaunen mit Quartventil (=Q):

f	e	d	c	b	a	g	f
1	2	4	Q	1	2	4	6

Tieftonübung in C-Dur

Bitte die Pausen genau einhalten!

Flügelhörner, Tenorhörner, Baritons und Tuben können die angebotene Alternative (Stichnoten) nutzen, da auf den Instrumenten der Hornfamilie die Mogeltöne nur sehr schwer zu erzeugen sind.



Grifftabelle für B-Instrumente

Ventilinstrumente ohne Quartventil:

c	h	a	g	f	e	(d	c)
1	1	2	1	1	1		1	1	
3	2		2	3	2		2	3	
	3				3				

Ventilinstrumente mit Quartventil:

c	h	a	g	f	e	d	c
4	2	2	1	4	2	2	1
	4		2		4	3	2
						4	3
							4

Zugposaunen ohne Quartventil:

c	H	A	G	F	E	(D	C)
6	7	2	4	6	7		4	6	

Zugposaunen mit Quartventil:

c	H	A	G	F	E	D	C
Q	Q	2	4	6	Q	Q	Q
		2			2	4-5	7-

dabei bedeuten: Ventil 4 bzw. Q = Quartventil,

4-5 = Lage zwischen Platz 4 und Platz 5,

7- = sehr tiefer Platz 7,

wobei davon ausgegangen wird, daß der Stimmzug des Quartbogens so eingestellt ist, daß die Quarte f-c stimmt.

Bindungen in C-Dur

Wir bauen die C-Dur-Tonleiter nach und nach mit gebundenen Tönen auf. Aufwärts mit einem Crescendo zum Spitzenton, abwärts mit einem Decrescendo (*mezzoforte*!).

Die Notennamen werden Abschnitt für Abschnitt angesagt oder vorgesungen.

Die BläserInnen sollen zu jedem geblasenen Ton den richtigen Namen denken.

Grifftabelle für B-Instrumente

Ventilinstrumente:

c	d	e	f	g	a	h	c	d	e	f	g
1	1	2	0	1	2	1	1	0	2	0	1
3	2			2		2					2

Zugposaunen:

c	d	e	f	g	a	h	c	d	e	f	g
6	4	2	1	4	2	4	3	1	2	1	2++

Stoßübungen in C-Dur

Aufwärts: Die C-Dur-Tonleiter vom C bis zum A

Musical notation for ascending C major scale exercises. The first system shows a treble clef staff with a 4/4 time signature. The first measure contains the notes C, D, E, F. The second measure contains a triplet of G, A, B. The third measure contains a triplet of C, D, E. The fourth measure contains a triplet of F, G, A. The fifth measure contains a triplet of B, C, D. The sixth measure contains a triplet of E, F, G. The seventh measure contains a triplet of A, B, C. The eighth measure contains a triplet of D, E, F. The ninth measure contains a triplet of G, A, B. The tenth measure contains a triplet of C, D, E. The eleventh measure contains a triplet of F, G, A. The twelfth measure contains a triplet of B, C, D. The thirteenth measure contains a triplet of E, F, G. The fourteenth measure contains a triplet of A, B, C. The fifteenth measure contains a triplet of D, E, F. The sixteenth measure contains a triplet of G, A, B. The sixteenth measure contains a triplet of C, D, E. The bass clef staff follows a similar pattern with notes in the lower register.

Musical notation for ascending C major scale exercises. The first system shows a treble clef staff with a 4/4 time signature. The first measure contains the notes C, D, E, F. The second measure contains the notes G, A, B, C. The third measure contains the notes D, E, F, G. The fourth measure contains the notes A, B, C, D. The fifth measure contains the notes E, F, G, A. The sixth measure contains the notes B, C, D, E. The seventh measure contains the notes C, D, E, F. The eighth measure contains the notes G, A, B, C. The ninth measure contains the notes D, E, F, G. The tenth measure contains the notes A, B, C, D. The eleventh measure contains the notes E, F, G, A. The twelfth measure contains the notes B, C, D, E. The thirteenth measure contains the notes C, D, E, F. The fourteenth measure contains the notes G, A, B, C. The fifteenth measure contains the notes D, E, F, G. The sixteenth measure contains the notes A, B, C, D. The sixteenth measure contains the notes E, F, G, A. The bass clef staff follows a similar pattern with notes in the lower register. The text "usw. bis" is written above the treble staff and below the bass staff. The text "Höchster Ton: A" is written in the center of the system.

Abwärts (Die "Meisterübung"): C-Dur-Tonleiter vom A bis zum C

Musical notation for descending C major scale exercises. The first system shows a treble clef staff with a 4/4 time signature. The first measure contains the notes A, G, F, E. The second measure contains the notes D, C, B, A. The third measure contains the notes G, F, E, D. The fourth measure contains the notes C, B, A, G. The fifth measure contains the notes F, E, D, C. The sixth measure contains the notes E, D, C, B. The seventh measure contains the notes D, C, B, A. The eighth measure contains the notes G, F, E, D. The ninth measure contains the notes C, B, A, G. The tenth measure contains the notes F, E, D, C. The eleventh measure contains the notes E, D, C, B. The twelfth measure contains the notes D, C, B, A. The thirteenth measure contains the notes G, F, E, D. The fourteenth measure contains the notes C, B, A, G. The fifteenth measure contains the notes F, E, D, C. The sixteenth measure contains the notes E, D, C, B. The sixteenth measure contains the notes D, C, B, A. The bass clef staff follows a similar pattern with notes in the lower register. The text "Erster Ton: A" is written in the center of the system. The text "usw. in C-Dur bis" is written above the treble staff and below the bass staff.

Musical notation for descending C major scale exercises. The first system shows a treble clef staff with a 4/4 time signature. The first measure contains the notes A, G, F, E. The second measure contains the notes D, C, B, A. The third measure contains the notes G, F, E, D. The fourth measure contains the notes C, B, A, G. The fifth measure contains the notes F, E, D, C. The sixth measure contains the notes E, D, C, B. The seventh measure contains the notes D, C, B, A. The eighth measure contains the notes G, F, E, D. The ninth measure contains the notes C, B, A, G. The tenth measure contains the notes F, E, D, C. The eleventh measure contains the notes E, D, C, B. The twelfth measure contains the notes D, C, B, A. The thirteenth measure contains the notes G, F, E, D. The fourteenth measure contains the notes C, B, A, G. The fifteenth measure contains the notes F, E, D, C. The sixteenth measure contains the notes E, D, C, B. The sixteenth measure contains the notes D, C, B, A. The bass clef staff follows a similar pattern with notes in the lower register.

Übungseinheit 6: Entspannungsübung

Wir blasen noch einmal die Tieftonübung bis zum Mogel-C (siehe Seite 9).

A N M E R K U N G E N

Diese Übungen sollten möglichst bald auswendig praktiziert werden. Wenn die grundlegenden Techniken beherrscht werden (Nase-Mund-Atmung, Lippenblasen, Mundstückblasen), können Abkürzungen benutzt werden. Es ist allerdings besser, die Vorübungen auszubauen und dadurch weitere bläserische Fähigkeiten zu entwickeln. Am Anfang werden die Übungen mehr Zeit benötigen, später mit genauerer Kenntnis und etwas Übung reduziert sich der Zeitaufwand.

Der fortgeschrittenere Bläser wird auf erweiterte Einblasübungen Wert legen, etwa nach dem Verhältnis 1/4: Einblasen und technische Übungen, 3/4: sonstiges Üben.

Wer die oben vorgestellten Übungen beherrscht, kann die einzelnen Teile erweitern. Es empfiehlt sich, den erarbeiteten Tonumfang zu notieren, vielleicht mit Datum, um den Fortschritt im Üben selbst kontrollieren zu können.

Wichtig ist die Einhaltung des Prinzips: A - L - Z

= Atmung - Lippe - Zunge, d. h. zuerst Übungen für die Atmung, dann für die Lippen, abschließend für den Zungenstoß.

Jedes Einblasen sollte Elemente dieser drei Bereiche in der genannten Reihenfolge enthalten.

Buzzin' 4 Power

Ansatzübungen ohne Instrument

A

Exercise A consists of two systems of two staves each. The first system is in 2/4 time and contains measures 1 and 2. The second system is in 4/4 time and contains measures 3 and 4. The melody is in the treble clef and the bass line is in the bass clef. Both parts feature a series of eighth notes in the first two measures, followed by a half note in the third measure, and a whole note in the fourth measure. The key signature has one flat (B-flat).

Exercise A continues with two systems of two staves each. The first system is in 3/4 time and contains measures 5 and 6. The second system is in 4/4 time and contains measures 7 and 8. The notation follows the same rhythmic pattern as the previous system. The key signature remains one flat. The text "usw." is written at the end of the second system.

B

Exercise B consists of two systems of two staves each. The first system is in 2/4 time and contains measures 1 and 2. The second system is in 4/4 time and contains measures 3 and 4. The notation is identical to exercise A.

Exercise B continues with two systems of two staves each. The first system is in 3/4 time and contains measures 5 and 6. The second system is in 4/4 time and contains measures 7 and 8. The notation is identical to exercise A. The text "usw." is written at the end of the second system.

C

Exercise C consists of two systems of two staves each. The first system is in 4/4 time and contains measures 1 and 2. The second system is in 6/4 time and contains measures 3 and 4. The notation is identical to exercise A.

D

Exercise D consists of two systems of two staves each. The first system is in 4/4 time and contains measures 1 and 2. The second system is in 6/4 time and contains measures 3 and 4. The notation is identical to exercise A.

E

Exercise E consists of two systems of two staves each. The first system is in 4/4 time and contains measures 1 and 2. The second system is in 4/4 time and contains measures 3 and 4. The notation is identical to exercise A. The key signature changes to two sharps (C major) in the second system. The text "B - Dur" is written below the first system and "C - Dur" is written below the second system. The text "usw." is written at the end of the second system.

Tonleitern

F - Dur

Musical notation for the F major scale (F - Dur). The piece is in 2/4 time. The treble clef part starts on F4 and ascends stepwise to F5. The bass clef part starts on F3 and ascends stepwise to F4. The key signature has one flat (Bb).

G - Dur

Musical notation for the G major scale (G - Dur). The piece is in 2/4 time. The treble clef part starts on G4 and ascends stepwise to G5. The bass clef part starts on G2 and ascends stepwise to G3. The key signature has two sharps (F# and C#).

A - Dur

Musical notation for the A major scale (A - Dur). The piece is in 2/4 time. The treble clef part starts on A4 and ascends stepwise to A5. The bass clef part starts on A2 and ascends stepwise to A3. The key signature has three sharps (F#, C#, and G#).

B - Dur

Musical notation for the B major scale (B - Dur). The piece is in 2/4 time. The treble clef part starts on B4 and ascends stepwise to B5. The bass clef part starts on B2 and ascends stepwise to B3. The key signature has two sharps (F# and C#).

C - Dur

Musical notation for the C major scale (C - Dur). The piece is in 2/4 time. The treble clef part starts on C4 and ascends stepwise to C5. The bass clef part starts on C3 and ascends stepwise to C4. The key signature has no sharps or flats.

D - Dur

Musical notation for the D major scale (D - Dur). The piece is in 2/4 time. The treble clef part starts on D4 and ascends stepwise to D5. The bass clef part starts on D2 and ascends stepwise to D3. The key signature has two sharps (F# and C#).

Es - Dur

Musical notation for the E-flat major scale (Es - Dur). The piece is in 2/4 time. The treble clef part starts on Eb4 and ascends stepwise to Eb5. The bass clef part starts on Eb3 and ascends stepwise to Eb4. The key signature has three flats (Bb, Eb, and Ab).